

# Question 1

Three current carrying wires point out of the page as illustrated. The currents are equal in magnitude.

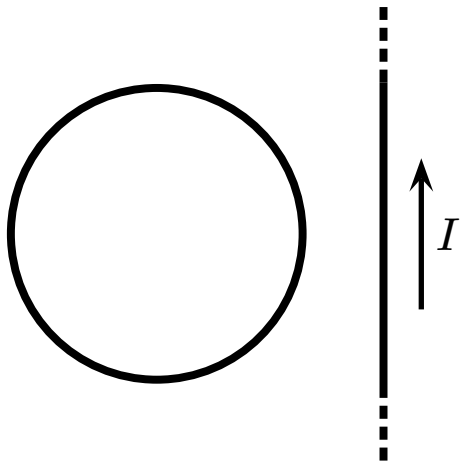


Which of the following is true?

1. The magnetic field at A is larger than at B.
2. The magnetic field at A is smaller than at B.
3. The magnetic field at A is the same as B.

## Question 2

Two current-carrying wires are placed near each other. The straight wire is infinitely long. The currents are such that the **net** magnetic field at the center of the loop is zero.



What is the direction of the current in the circular wire?

1. Clockwise
2. Counter-clockwise
3. Current is zero.