

## General Physics: Class Exam II

20 March 2013

Name: \_\_\_\_\_

Total: /70

### Instructions

- There are 8 questions on 5 pages.
- Show your reasoning and calculations and always justify your answers.

### Physical constants and useful formulae

Coulomb's constant:  $k = 9.0 \times 10^9 \text{ Nm}^2/\text{C}^2$

Electron charge:  $q_{\text{electron}} = -1.60 \times 10^{-19} \text{ C}$

Proton charge:  $q_{\text{proton}} = +1.60 \times 10^{-19} \text{ C}$

Permeability constant:  $\mu_0 = 4\pi \times 10^{-7} \text{ Tm/A}$

Electron mass:  $m_e = 9.11 \times 10^{-31} \text{ kg}$

Proton mass:  $m_p = 1.67 \times 10^{-27} \text{ kg}$

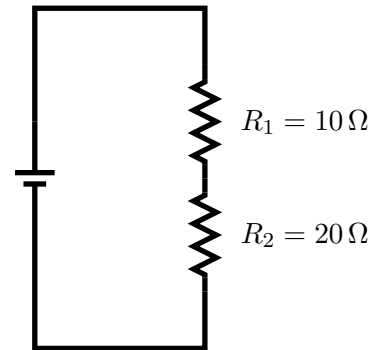
### Question 1

In a procedure to coat an object with copper, copper ions flow through a solution and accumulate on the object. Each copper ion has the same charge as two protons. The current that flows is 0.025 A and it flows for 30 min. Determine the total number of copper ions that accumulate on the object.

### Question 2

Two resistors are connected to a battery as illustrated. Let  $I_1$  and  $I_2$  denote the currents through resistor 1 and resistor 2 respectively. Which of the following (choose one) is true?

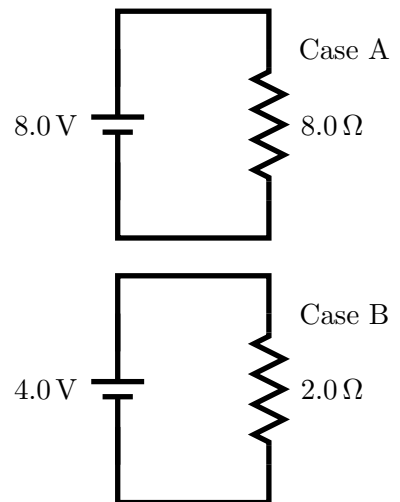
- a)  $I_2 < \frac{1}{2} I_1$
- b)  $I_2 = \frac{1}{2} I_1$
- c)  $I_2 = I_1$
- d)  $I_2 = 2I_1$



/5

### Question 3

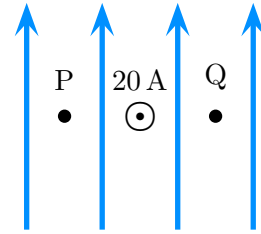
A 8.0 V battery is connected to resistor A, which has resistance 8.0  $\Omega$ . A 4.0 V battery is connected to resistor B, which has resistance 2.0  $\Omega$ . Zog claims that the *power* provided by resistor A is double that provided by B. Geraldine claims that the power delivered for resistor B is double that for resistor A. Is either correct? Explain your answer.



/10

#### Question 4

A hidden collection of source magnets produces a uniform magnetic field which points vertically up and which has magnitude  $5.0 \times 10^{-4} \text{ T}$ . A long straight wire points directly out of the page and carries current  $20 \text{ A}$ .

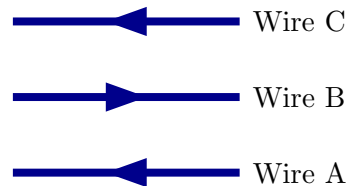


- a) Determine the net magnetic field at the point labeled P, which is a distance of  $0.010 \text{ m}$  directly left of the wire.
- b) At one instant a particle with charge  $6.0 \times 10^{-6} \text{ C}$  is at point P and is moving directly left with speed  $5.0 \times 10^5 \text{ m/s}$ . Determine the force exerted on the particle.
- c) Suppose that the same particle were moving in with the same velocity at point Q, which is a distance of  $0.010 \text{ m}$  directly left of the wire. How would the magnitude of the force compare (larger, smaller, same) to that exerted on the particle at P? Explain your answer.

/20

**Question 5**

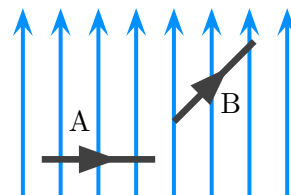
Three wires carry currents as illustrated. The magnitudes of the currents are equal. The distances between *adjacent* wires are equal. Let  $F_A$  denote the *magnitude of the net force* on wire A, etc., . . . Which of the following (choose one) is true?



- a)  $F_A = F_B = F_C$
- b)  $F_A = F_C < F_B$
- c)  $F_A = F_C > F_B$
- d)  $F_C < F_B < F_A$

**Question 6**

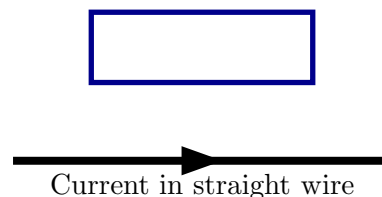
Two wires that have the same length and carry the same current are in the same uniform magnetic field. These are oriented as illustrated. How does the magnitude of the force exerted by the magnetic field on A compare (larger, smaller, same) to that exerted on B? Explain your answer.



/5

**Question 7**

A current flows through an infinitely long straight wire as illustrated. A rectangular loop held fixed as illustrated. Which of the following (choose one) is true while current through the straight wire is increased?



- a) There is no current in the rectangular loop
- b) There is a counterclockwise current in the rectangular loop.
- c) There is a clockwise current in the rectangular loop.
- d) There is a current (in the rectangular loop) which repeatedly changes direction.

/5

### Question 8

A circular metal ring has radius 0.040 m. The ring is perpendicular to a uniform magnetic field. During an initial period of duration 0.050 s, the field strength increases from 0.0 T to 8.0 T. During a final period of duration 0.020 s, the field strength decreases from 8.0 T to 0.0 T.

a) During which of these two periods is the induced EMF largest? Explain your answer.

b) Determine the value of the induced EMF during the final period.

/8